

SPC Wall Panel Installation Guidelines

READ this entire installation guide before beginning your installation. L.W. Mountain, Inc. (LWM) is not responsible and will not be held liable for project failures if installation guidelines are not followed. LWM requires that you install these panels over an existing substrate to ensure proper structural integrity. For the most up to date information, please visit our website @ www.lwmountain.com

FOR INSTALLATION IN DRY ENVIRONMENTS

Appropriate substrates in a dry environment would include framed walls with existing tile, drywall, cement board, OSB, or plywood. The wall panels must be attached to structures that comply with local building codes and have incorporated appropriate moisture abatement measures.

FOR SHOWER, TUB, OR DIRECT WATER ENVIRONMENTS

Installation in wet areas must follow all local building codes. In a tub or shower area, existing ceramic tile walls can be covered after proper preparation for flatness. Otherwise, installation over a waterproof substrate is required, such as Cement Board®, Schluter Kerdi Board®, Johns Manville Go Board®, Hardiebacker®, WPBK Triton®, Fiberock®, and equivalent products. All seams of the panels must have sealant applied.

SAFETY

It is recommended to wear appropriate safety equipment to avoid risk of injury. These include protective eye wear and gloves.

PLEASE NOTE:

LWM SPC wall panels are intended for interior use only. Wall panels should be stored and transported horizontally. They should be kept on a solid flat surface. LWM is not responsible or liable for any labor costs or damaged product incurred as a result of improper installation. *All L.W. Mountain, Inc. products are manufactured in accordance with accepted industry standards. If the material is not acceptable, do not install it and contact the seller immediately.*

INSTALLATION

Tools and supplies needed:

Measuring Tape
Utility Knife
Level
Hand saw or circular saw/table saw
Drill bit and jigsaw for cutting holes

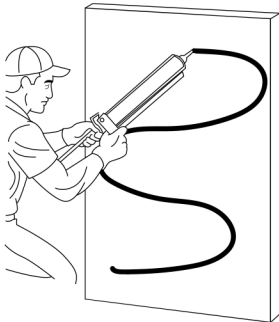
Preparation

Make sure all surfaces are clean, dry, smooth and free from dust, grease, wax, etc. Clean the back surface of the panels by wiping with a clean cloth. Remove all the wall moldings, baseboards, fixtures and electric socket covers. Measure walls. Check for level and square. Depending on dimensions and construction, some panels may need to be trimmed.

NOTE: A protective film is applied to the face of all panels to protect them during transportation. This film should be removed before the panel is installed.

Step 1: Most installations will begin on an inside corner. If you use matching trim, install it first. LWM SPC wall panels have a unique interlocking tongue and groove. Start with the tongue side into the corner. Trim if needed. (If installing in a wet area with no matching inside corner molding, a flat inside corner cap must be glued in place.)

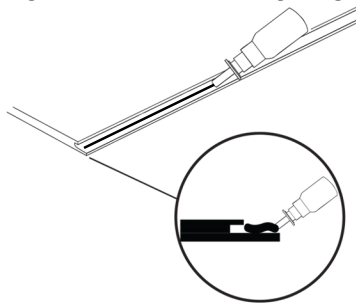
Step 2: Apply adhesive in a wave pattern to the back of the panel. If installed in a wet area, apply 1/8" bead of sealant to the matching inside corner or to the corner cap. **NOTE:** A few strips of double-faced tape can be added to hold the panel in place while the adhesive is setting. **REFER TO STEP 2.2**



STEP2.2

Step 3: Press the panel firmly onto the wall, making sure it is tight to the corner.

Step 4: Apply adhesive to the next panel, insert tongue into groove and press firmly to the wall. If installed in a wet area, apply 1/8" bead of sealant to the groove before inserting tongue. Continue in this manner until the next corner.



Step 5: To install the last panel to a matching inside corner, place the matching inside corner onto the panel first. Apply adhesive to the back of the panel. Insert the tongue into the groove. Press panel with matching inside corner firmly to wall. If installed in a wet area, apply 1/8" bead of sealant to the matching inside corner or to the corner cap.

Step 6: Cut any panels to accommodate light switches, electrical outlets and shower fixtures must be cut and dry fit before adhering to the wall.

Step 7: Continue installation, applying matching outside corners and end caps.

Step 8: For wet areas, silicone sealant must be applied to the bottom and tops of all panels. If no matching inside or outside corners were used, a silicone sealant must be applied to the corners.

NOTE: When attaching accessories, like coat hooks, mirrors, or lighting fixtures, drill a hole through the panel and attach to the framing inside the wall. Use a stud finder to locate framing.